

## Introduction

On behalf of the governors of Anns Grove Primary, it is a pleasure to welcome you to the school. We are proud of our children, our dedicated staff and the community we serve.

As governors, we work closely with both the headteacher and the senior leadership team in setting the strategic direction for the school. Our pupils deserve the best possible education and experiences to develop their confidence, self-esteem and personal development. Together, we work hard to achieve this.

Anns Grove is a vibrant, inclusive and happy school and we are determined to ensure that, during their time with us, your children achieve their full potential. Please read on to learn more about how governors support the work of the school.

**Scott Glover**  
**Chair of Governors**

## Role of Governors

The governing body makes decisions about how the school is run, including staffing appointments. We monitor and help evaluate the work of the school and are responsible for the performance management of the headteacher. We are also responsible for ensuring the school delivers a broad, ambitious and coherently planned curriculum designed to give *all* our learners the knowledge and cultural capital needed to succeed in life. We ensure that school leaders deliver a curriculum that meets the needs of disadvantaged children and those with special educational needs, high needs and/or disabilities. Through visits to the school, meetings with school leadership and the commissioning of external assessors, we check that teachers have good knowledge of what they teach; that they do so effectively; that children enjoy learning; and that they retain what they have learnt to make them confident future learners who are able to fulfil their aspirations and interests both now and later in life.

Since 1<sup>st</sup> April 1990, governors have been responsible for managing the budget as part of our responsibilities under Local Management of School legislation. Key governors are involved in the school's annual budget setting, which is scrutinised and approved by the full governing body.

Governors are also responsible for ensuring that the school carries out its 'duties to safeguard and promote the welfare of children' (*Keeping Children Safe in Education 2019*, DfE). For more information on governance and safeguarding, see the dedicated section below.

## The Governing Body at Anns Grove

The school's governing body is structured to reflect the requirements for schools as set out in Ofsted's *Education Inspection Framework*. At Anns Grove, we have three committees, which meet every term and report back to the Full Governors Meetings (FGM), which also take place on a termly basis. Each governor is a member of at least one committee (see the governor profiles below).

### ***Quality of Education & Personal Development Committee***

This committee has strategic oversight of the following areas:

- Curriculum and cultural capital
- Personal development and pupil welfare
- Pupil progress
- Learners' behaviour and conduct
- Attendance and punctuality
- Safeguarding and the school's duty under the 'Prevent' strategy
- Promoting British values and an appreciation of diversity
- The physical and mental health of pupils (including the promotion of sport and healthy eating)
- Parent/carer feedback on the areas listed above

### ***Strategic Leadership Committee***

This committee has strategic oversight of the following areas:

- Headteacher performance management
- Human Resources and staff pay
- School finance and budget-setting
- Procurement and commissioning
- School premises and resources (including Health and Safety)
- Relationships and opportunities within the local community, including other schools, community groups, local businesses and other stakeholders
- Future strategic direction of the school
- Further development of the governing body's capacity (including training and recruitment)
- Parent/carer feedback on the areas listed above

### ***Staff Well-being Committee***

Governors recognise that well-being at work is one of the most important dimensions in a person's overall well-being. To that end, the Staff Well-being Committee is dedicated to creating a school culture that is supportive, positive, open and respectful. We will ensure that school leaders promote their own and their colleagues' well-being by reviewing workplace relationships, workload and the provision of continual personal and professional development. As part of its work, the committee takes into consideration:

- the health of employees and volunteers (how they feel physically and mentally)
- relationships with others at work
- the purpose of their work at Anns Grove (including clarity of goals, motivation, workload, and individuals' ability to influence decisions)
- the school environment (work culture, facilities and tools)
- security (financial security, safety, bullying/harassment)

### **Other committees**

The governing body may form other ad hoc committees, depending on the specific needs of the school at particular times.

## Link Governors

In addition to the above, each non-staff governor has responsibility for a specific area/s of the school's curriculum. By meeting with the teacher responsible for their curriculum area and reviewing that staff member's understanding, planning, sequencing, delivery, assessment and evaluation of their own curriculum area, they are responsible for ensuring that children receive detailed, impactful and aspirational teaching. Each link governor is asked to report back on their curriculum area at the termly FGM. (For more information on the structure and constitution of the governing body, please see below.)

## Joining and communicating with the governing body

To become a parent governor, you must be the parent or carer of a child at Anns Grove. Parent governors are elected by the school's parents and carers to serve a term of four years. While parent governors speak as individuals, they are able to bring the views of other parents for consideration by the governing body.

Co-opted and Local Authority governors are elected by the governing body, and are recruited to provide the specific skills, experience and areas of competency the governing body needs to fulfil its statutory and wider obligations. (Governors complete an annual skills audit to identify strengths and areas for further development.) Co-opted governors come from a variety of backgrounds, while our Local Authority governors have professional roles within Sheffield LA.

If you would like to contact the governing body, please email: [sglover@annsgrove.sheffield.sch.uk](mailto:sglover@annsgrove.sheffield.sch.uk). Alternatively, you may write to us at Anns Grove Primary School, Anns Road, Sheffield, S2 3DJ. If you mark your envelope for the attention of the Governing Body, this will be forwarded on to them in confidence.

## Safeguarding

The governing body welcomes the views of parents, carers and the wider community and all correspondence is treated seriously and confidentially. If you have a concern regarding safeguarding and/or the well-being of children, you should raise this immediately with the school's Designated Safeguarding Lead, Sam Fearnough. You can do this by emailing her at: [sfearnough@annsgrove.sheffield.sch.uk](mailto:sfearnough@annsgrove.sheffield.sch.uk) or by phoning the school office. If, however, your concern is about the Headteacher or general safeguarding practice at school, you should immediately contact the Chair of Governors. Any such concerns, however minor they may seem, will be taken seriously and investigated. Please read our safeguarding policy, which is available at: <https://www.annsgrove.co.uk/policies>.

The Chair of Governors is also the school's nominated Safeguarding Governor. He is responsible for ensuring that all staff, governors and volunteers are appropriately trained and inducted; that school recruitment follows Safer Recruitment guidance and statutory requirements; that the school's safeguarding policy meets the statutory requirements and is updated on an annual basis; that the

school's Single Central Record is complete and accurate; and that the school promotes an ongoing safer culture. The Safeguarding Governor, along with the Headteacher and Deputy Safeguarding Lead, completes an annual safeguarding audit, which is then submitted to Sheffield LA's safeguarding team.

## Our governors

### Scott Glover

**Chair of Governors (co-opted governor)**

**Link governor for Safeguarding and English. Member of the Quality of Education & Personal Development and Strategic Leadership committees.**

[sglover@annsgrove.sheffield.sch.uk](mailto:sglover@annsgrove.sheffield.sch.uk)

Originally appointed 15<sup>th</sup> October 2014, reappointed as Chair on 12<sup>th</sup> November 2018, term of office 12/11/18-11/11/22.

Having previously been a governor at Holt House Infant School, I joined Anns Grove in 2014 and became the Chair the following year. I live locally and have worked with schools for almost twenty years. I currently work as a freelance consultant, advising schools throughout the country on recruitment and safeguarding. I am an accredited Safer Recruitment trainer and have a particular interest in ensuring that Anns Grove promotes the safety and wellbeing of its pupils. I am also committed to widening the cultural experiences of all our children.

### Dave Mappin

**Vice-Chair of Governors (parent governor)**

**Link governor for Geography & History. Member of the Strategic Leadership and Staff Well-being committees.**

[dmappin@annsgrove.sheffield.sch.uk](mailto:dmappin@annsgrove.sheffield.sch.uk)

Originally appointed 15<sup>th</sup> September 2015, reappointed 12<sup>th</sup> November 2018, term of office 12/11/18-11/11/22.

I have been a parent at the school for five years and a governor for four years. I was raised, schooled and have lived in the area for the majority of my life. My governor role includes a focus on staff well-being, strategic planning and geography and history. I also run the school chess club.



## **Tracy Stones**

**Chair of the Quality of Education and Personal Development Committee (co-opted governor)  
Link governor for #. Member of the Quality of Education & Personal Development committee.**

[tstones@annsgrove.sheffield.sch.uk](mailto:tstones@annsgrove.sheffield.sch.uk)

Originally appointed 9<sup>th</sup> November 2017, term of office 09/11/17-08/11/21.

## **Donna Ellerby**

**Chair of School Leadership & Staffing (co-opted governor)  
Link governor for #. Member of the Strategic Leadership and # committees.**

[dellerby@annsgrove.sheffield.sch.uk](mailto:dellerby@annsgrove.sheffield.sch.uk)

Originally appointed 15<sup>th</sup> October 2014, reappointed 12<sup>th</sup> November 2018, term of office 12/11/18-11/11/22.

## **Sarah Ahmed**

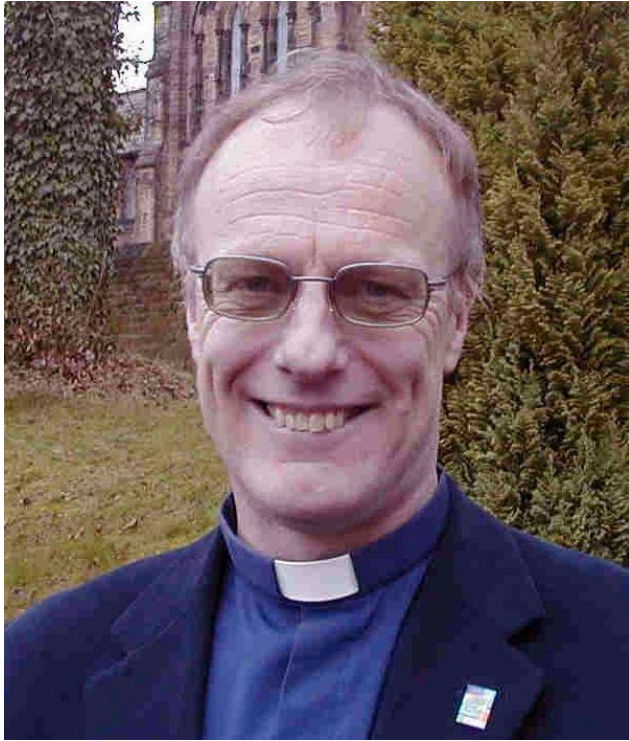
**Co-opted governor**

**Link governor for PE and IT. Member of the Quality of Education & Personal Development and # committees.**

[sahmed@annsgrove.sheffield.sch.uk](mailto:sahmed@annsgrove.sheffield.sch.uk)

Appointed 15<sup>th</sup> November 2016, term of office 15/11/16-14/11/20.

#



## **Revd. Bob Evans**

**Co-opted governor**

**Link governor for PSHE and RE. Member of the Strategic Leadership and Staff Well-being committees.**

[bevans@annsgrove.sheffield.sch.uk](mailto:bevans@annsgrove.sheffield.sch.uk)

Appointed 11<sup>th</sup> June 2018, term of office 11/06/18-10/06/22.

Having previously been a governor at Harden Primary School in Bradford, I moved to Heeley as Vicar in 2017 and joined Anns Grove in 2018. Prior to ordination I was a Chartered Surveyor and still retain an interest in land and buildings. I am keen to see the school promote British Values, be involved with the local community, and offer a wide curriculum to include business studies. I am trained in conflict resolution.



## **Andy Jackson**

**Co-opted governor**

**Link governor for Community and #. Member of the Strategic Leadership Committee.**

[ajackson@annsgrove.sheffield.sch.uk](mailto:ajackson@annsgrove.sheffield.sch.uk)

Appointed 25<sup>th</sup> November 2019 (pending FGM), term of office 25/11/19-24/11/23.

I live locally and have worked for Heeley Trust for nearly 20 years. Heeley Trust is 24 years old, established to create a local community park and to make a lasting change to our neighbourhood. [Heeley People's Park](#) is one of the first community owned greenspaces in the city. Other projects include [SUM Studios](#), [ReCycleBikes](#) and [Sheffield Online](#). Anns Grove School is a really important anchor in our community and I hope to ensure we work really closely together.

# [photo - requested]

## **Nicky Leach**

**Co-opted governor**

**Link governor for #. Member of the Quality of Education & Personal Development and # committees.**

[nleach@annsgrove.sheffield.sch.uk](mailto:nleach@annsgrove.sheffield.sch.uk)

Appointed 21<sup>st</sup> May 2003, current term of office 15/11/16-14/11/16.

#



## **Rachael Lyon**

Parent governor

Link governor for Cultural Capital. Member of the Quality of Education & Personal Development and # committees.

[rlyon@annsgrove.sheffield.sch.uk](mailto:rlyon@annsgrove.sheffield.sch.uk)

Appointed 25<sup>th</sup> November 2019 (pending FGM), term of office 25/11/19-24/11/23.

#



## **Patrick O'Shea**

Parent governor

Link governor for Curriculum Implementation. Member of the Quality of Education & Personal Development and # committees.

[poshea@annsgrove.sheffield.sch.uk](mailto:poshea@annsgrove.sheffield.sch.uk)



Appointed 25<sup>th</sup> November 2019 (pending FGM), term of office 25/11/19-24/11/23.

My son is a year 1 pupil at Anns Grove. I have over nine years' experience as a teacher in education across varying contexts and have a good understanding of the new Ofsted education inspection framework. I am passionate about community cohesion and preparing young people for life in our multi-faceted and ever-changing society. To this end, I believe that children's understanding of society and the wider world are important in developing respect, responsibility and resilience. Further, I feel the integration of wider societal issues such as mental health and the environment into the curriculum is paramount. I believe children should be able to develop their confidence, self-esteem and sense of identity through their interaction with the curriculum and that it should therefore extend beyond its academic elements. I feel strongly that educational institutions have a responsibility to respond to their learners' needs, in particular those who are disadvantaged and those with special educational needs. All learners should be able to sufficiently access and engage in the curriculum and that a high level of ambition and dedication is required to achieve this.

## **Stephen Sell**

**Local Authority governor**

**Link governor for Behaviour and Attendance. Member of the Quality of Education & Personal Development and # committees.**

[ssell@annsgrove.sheffield.sch.uk](mailto:ssell@annsgrove.sheffield.sch.uk)

Appointed 9<sup>th</sup> November 2017, term of office 12/11/18-11/11/22.

#



## **Mark Wallace**

**Parent governor**

**Link governor for Science. Member of the Strategic Leadership and # committees.**

[mwallace@annsgrove.sheffield.sch.uk](mailto:mwallace@annsgrove.sheffield.sch.uk)

Appointed 5<sup>th</sup> October 2016, term of office 05/10/16-04/10/20.

My wife, Libby, and I have lived locally for about eight years and have two sons at the school. I am a Director at an engineering business located not far from the school. As a governor, I take a particular interest in the teaching of science as well as the school's facilities and financial wellbeing.

## **Sam Fearnough**

**Headteacher**

**Member of the Quality of Education & Personal Development and Strategic Leadership committees.**

[sfearnough@annsgrove.sheffield.sch.uk](mailto:sfearnough@annsgrove.sheffield.sch.uk)

Appointed 31<sup>st</sup> October 2013.

## **Jane Christopher**

**Staff governor**

**Member of the # and Staff Well-being committees.**

[jchristopher@annsgrove.sheffield.sch.uk](mailto:jchristopher@annsgrove.sheffield.sch.uk)

Originally appointed 25<sup>th</sup> November 2019, term of office 25/11/19-24/11/23.

## **Ann Farrar**

**Associate governor**

**Member of the Quality of Education & Personal Development and # committees.**

[afarrar@annsgrove.sheffield.sch.uk](mailto:afarrar@annsgrove.sheffield.sch.uk)

Originally appointed 14<sup>th</sup> October 2014, reappointed 12<sup>th</sup> November 2018, term of office 12/11/18-11/11/22.

## **Wendy Roberts**

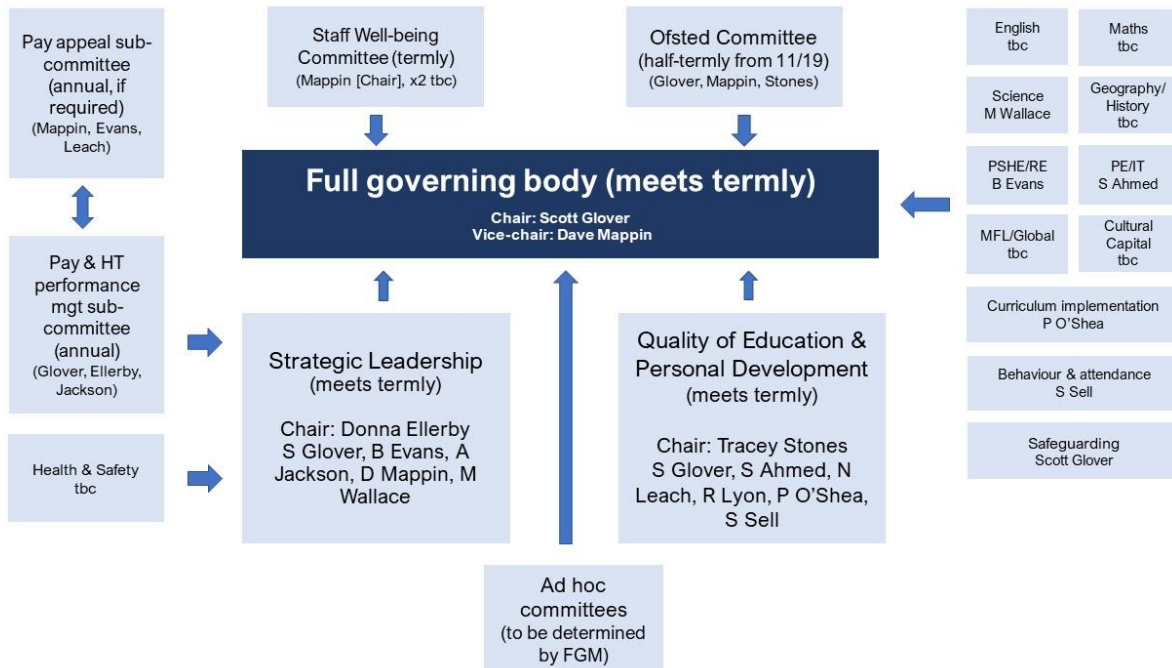
**Associate governor**

**Member of the Quality of Education & Personal Development and # committees.**

[wroberts@annsgrove.sheffield.sch.uk](mailto:wroberts@annsgrove.sheffield.sch.uk)

Originally appointed 24<sup>th</sup> February 2004, reappointed 12<sup>th</sup> November 2018, term of office 12/11/18-11/11/22.

## Governing Body structure at Anns Grove



## Instrument of Anns Grove Primary School Governing Body

Please open the attachment for further information about the governing body, including any business and financial interests, any governance roles in other educational institutions and any material interests arising from relationships with the other governors or staff members of Anns Grove.